

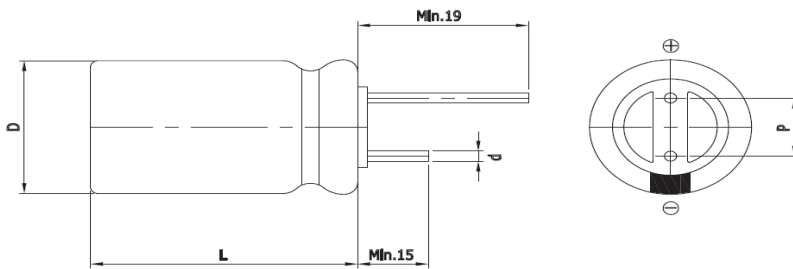
## Features

### EDLC (Electric Double Layer Capacitor)

- High Power Density (Low ESR)
- Over 500,000 cycle life (semi-permanent)
- Short-term Peak Power assist applications
- RoHS compliant



## Drawing



|        |              |
|--------|--------------|
| D (Φ)  | 13.0 +1.0Max |
| L (mm) | 20.0 ±1.5    |
| d (Φ)  | 0.6 ±0.1     |
| P (mm) | 5.0 ±0.5     |

## Specification

| Item                            | Characteristics  |  |
|---------------------------------|--|--|
| Product series                  | EDLC   |  |
| Rated Voltage (V <sub>R</sub> ) | 2.7V   |  |
| Operating Temperature           | -40 ~ +65°C  |  |
| Capacitance Tolerance           | -10 ~ +30%   |  |
| High Temperature Load Life      | After 1,000 hours at V <sub>R</sub> loaded under +65°C, capacitors meet the following criteria.                            |  |
|                                 | Capacitance Change   | ≤ 30% of initial value   |
|                                 | ESR  | ≤ 2 times of specified value                                       |
|                                 | 85°C Temperature   | Max. 2.3V  |
| Cycle Life Characteristics      | Cycle  | Over 500,000   |
|                                 | ΔC   | ≤ 30% of initial value   |
|                                 | ESR  | ≤ 2 times of specified value                                       |
|                                 | Method   | Cycle of Charge/discharge from V <sub>R</sub> to 1/2V <sub>R</sub> |
| Shelf Life                      | 2 Years<br>No Electrical Charge, Temperature below 70°C<br>(ΔC : ≤ 10% of initial value / ΔESR : ≤ 50% of specified value) |  |

| Part Number    | Rated Voltage (V) | Capacitance (F) | ESR (mΩ) |    | Max. Current (A) | Leakage Current (mA, 72hr) | Size (mm) |
|----------------|-------------------|-----------------|----------|----|------------------|----------------------------|-----------|
|                |                   |                 | AC(1kHz) | DC |                  |                            | D × L     |
| VEC 2R7 106 QC | 2.7               | 10              | 35       | 55 | 8.5              | 0.020                      | 13 X 20   |

\* Max. Current : 1 sec. discharge to 1/2V<sub>R</sub>

Version 9.2 2019.02.21.